

# SOUTH BANK FILMING



SITES

Occupying 13 acres of the vibrant South Bank with panoramic riverside views towards the City of London, Coin Street Community Builders manage a fabulous mix of locations including the iconic Oxo Tower Wharf.

The extensive riverside sites offer stunning North Bank and St Paul's Cathedral vistas alongside leafy parks and twinkling tree lined arcades. The shops, courtyards and restaurants at Oxo Tower Wharf and Gabriel's Wharf provide the perfect urban backdrop for a wide range of film and TV productions.

From beautiful filming locations to back of house spaces, to unique architectural features and unit base parking; Coin Street offers a diverse range of locations and uses.



DOON STREET CAR PARK

GREEN SPACE

COIN STREET NEIGHBOURHOOD CENTRE

RIVERSIDE GRASS

RIVERSIDE WEST

BERNIE SPAIN GARDENS

RIVERSIDE SLICE

PLATFORM & COURTYARD

OXO TOWER

BARGEHOUSE

RIVERSIDE CENTRAL

GABRIEL'S WHARF

OBSERVATION POINT

QUEEN'S STONE

QUEEN'S STONE JETTY

GALLERY@OXO

OXO JETTY

# CONTENTS

page 3

**Outdoor Vistas – riverside walkways, parks and gardens**

- Observation Point
- Queen's Stone
- Riverside Central and Riverside Grass
- Bernie Spain Gardens
- Jetties

page 4

**Outdoor Architecture – shops and courtyards**

- Gabriel's Wharf
- Oxo Tower Wharf Courtyard
- Bargehouse Exterior
- Oxo Tower Riverside Arcade and Walkways

page 5

**Outdoor Private Spaces – blank canvases and skyline views**

- Doon Street car park
- Green Space
- Coin Street neighbourhood centre Roof Terrace
- Oxo Tower Viewing Balcony

page 6

**Indoor Spaces – unique architecture, raw and contemporary locations**

- Bargehouse
- gallery@oxo
- Coin Street neighbourhood centre

page 7

**Indoor Spaces – unit base parking, screenings and back of house**

- Coin Street neighbourhood centre
- Doon Street car park

**back cover**

**Make an Enquiry**

- How to apply
- Useful information
- Why choose Coin Street

Stretching between the National Theatre and Mondrian Hotel, South Bank Riverside Walkways are a firm favourite for both film crews and photo shoots. Offering iconic views from riverside cobbled footpaths, the various locations all provide unique backdrops.

The aptly named **Observation Point** is widely recognised for its unrivalled vistas of St Paul's and the City skyline over Blackfriars Bridge, whilst **Riverside Central** provides North Bank views including Somerset House and Waterloo Bridge. **Riverside Grass** affords green open space amidst the twinkling tree lined arcade and the **Jetties** propel site lines 30 meters into the Thames.

**Bernie Spain Gardens** is a large riverside grass park flanking **Oxo Tower Wharf** and surrounding the historic **Queen's Stone**; both sites provide ample sized set back spaces but with London landmark views.

# Riverside Walkways, Parks and Gardens



OBSERVATION POINT



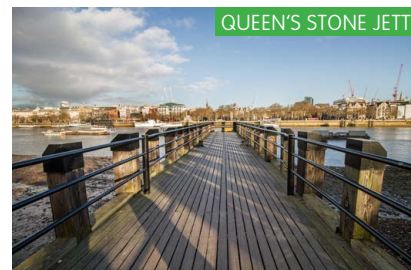
RIVERSIDE GRASS



BERNIE SPAIN GARDENS



QUEEN'S STONE



QUEEN'S STONE JETTY



RIVERSIDE GRASS

Credits include: Toff Guys, Unlocked, Our Kind of Traitor, Love Actually, Apprentice, Surprise Surprise, Secret Diary of a Call Girl, Origins of Us. ITV's This Morning, Loose Women, Good Morning Britain and Lorraine all regularly broadcast live from the sites.

Adjacent to the riverside walkways and in contrast to the open leafy spaces are two very different styles of shopping wharfs. **Gabriel's Wharf** provides a village feel in an urban location. Originally old garages, the charming shop-fronts offer a quirky, colourful backdrop to the open, pot-planted piazza they surround. Features include ground level shops, a bandstand, outdoor cafes/restaurant seating and an installation of wooden sculptures.

In juxtaposition the urban **Courtyard at Oxo Tower Wharf** presents a 2500m<sup>2</sup> of central grey slate space flanked by two buildings. The north face is covered by the external glazed and red brick walls of Oxo Tower; its glass-fronted design shops, galleries and cafes run along the ground, first and second floors, and feature external wooden walkways that offer elevated views of the courtyard below. The south side faces **Bargehouse**; with distressed exposed brickwork and a florescent light installation, it offers a truly unique backdrop.

Running between the river-facing shops at **Oxo Tower Wharf** and the Thames wall is a red brick **riverside arcade** with double vaulted ceiling height. The external wooden walkway continues at first floor level and ends with a wide, west facing flight of stairs to riverside level.



# Shops and Courtyards



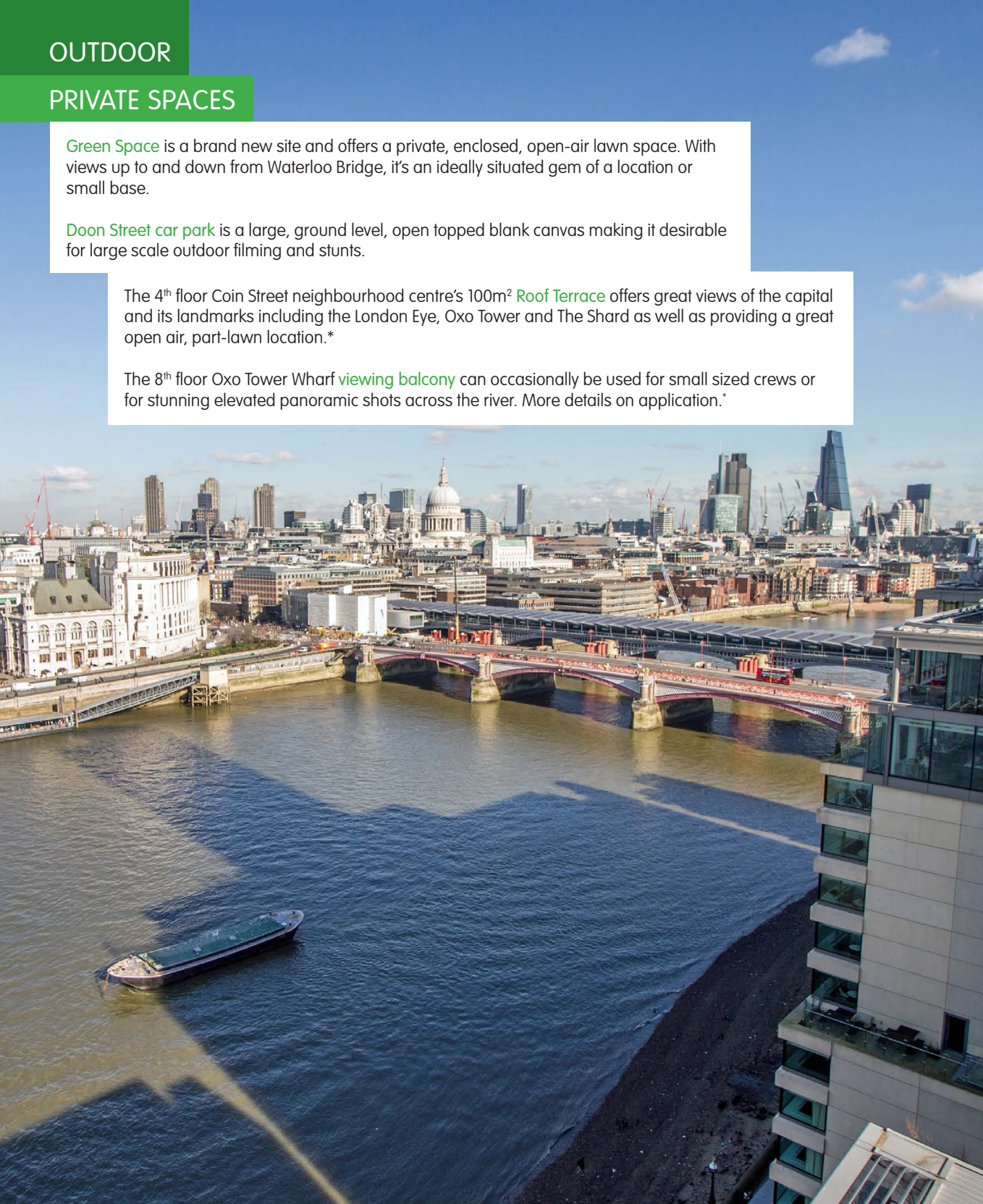
Credits include: Love Actually, Bones, Closer, Last Chance Harvey, Undercover, Houseful 3, First Dates Hustle, You, Me and The Apocalypse, London Has Fallen Sherlock, Lorraine and Sparks and Embers.

**Green Space** is a brand new site and offers a private, enclosed, open-air lawn space. With views up to and down from Waterloo Bridge, it's an ideally situated gem of a location or small base.

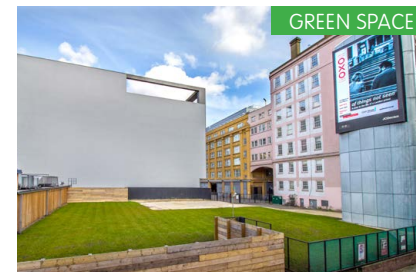
**Doon Street car park** is a large, ground level, open topped blank canvas making it desirable for large scale outdoor filming and stunts.

The 4<sup>th</sup> floor Coin Street neighbourhood centre's 100m<sup>2</sup> **Roof Terrace** offers great views of the capital and its landmarks including the London Eye, Oxo Tower and The Shard as well as providing a great open air, part-lawn location.\*

The 8<sup>th</sup> floor Oxo Tower Wharf **viewing balcony** can occasionally be used for small sized crews or for stunning elevated panoramic shots across the river. More details on application.\*



# Blank Canvases and Skyline Views



Credits include: London Has Fallen, Our Kind of Traitor, Our Girl, Interceptor, Spooks, Ab Fab The Movie, Taboo, Chef and Alice Through the Looking Glass, Coldplay and Ronan Keaton music videos.

\*Noise, time and weekend restrictions may apply.

Raw and industrial **Bargehouse** is a favourite for gritty warehouse scenes. Its wonderfully distressed mix of brick and peeling paint walls with semi exposed concrete and rusted steel pillars make it an ideal choice for music videos and film locations. Built c1900 and largely untouched, the building has an array of interesting architectural features; original loading bay windows, three utilitarian staircases and stairwells and moulded door frames. Its wide ground floor, roadside loading bay doors make an easy load-in and the labyrinth of rooms allow for diverse backdrops as well as ample back of house space.

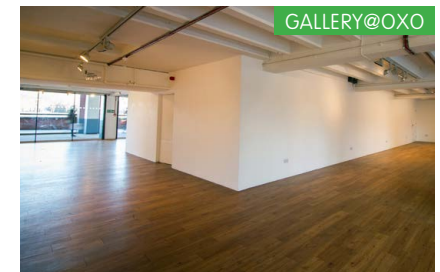
The **gallery@oxo** is a white walled contemporary ground floor space. It may occasionally be hired as an empty space or with an exhibition in situ. It features floor to ceiling glazed walls both river and courtyard facing and has a large internal storage and kitchen area for back of house.

The **Coin Street neighbourhood centre** features brightly coloured panels "inspired by the facades of Venetian palazzo" and a modern brightly coloured, solar panelled exterior.

## Unique Architecture, Raw and Contemporary Locations



BARGEHOUSE



GALLERY@OXO



GALLERY@OXO



BARGEHOUSE



BARGEHOUSE STAIRWELL



BARGEHOUSE EXTERIOR

Credits include: Tycoon, My Big Fat Diet, Text Santa, Closer, Killjoys, Sunset Overdrive and Love Actually.

\*Hire as an empty space subject to availability. Hire with an exhibition in situ subject to suitability and third-party consent.

The Coin Street neighbourhood centre's plethora of rooms makes it a varied option for back of house opportunities, screening and meetings. The spaces have previously been used for a variety of crew requirements including catering and dining space, hair and wardrobe, extras holding, rehearsal space, pilots and green rooms.

Features include open lobbies, flexible room sizes, ceiling heights of up to 3.2 meters and digital projectors. There is also direct basement access through to lifts from the adjacent underground car park. It's ideally situated within a 3 minute walk from the Riverside Walkways and Waterloo Train and Tube Stations.

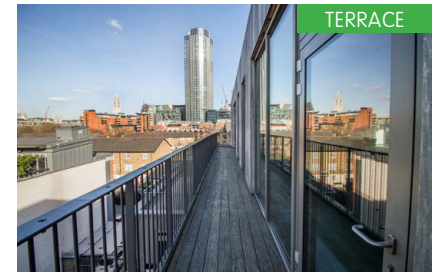
Within a 2 minute walk to the centre is Doon Street car park, a well established ground level, non height restricted, open air, central London car park. It's ideal for large unit basis in its entirety, or half can be hired for medium to small sized basis.



# Unit Base Parking, Screenings and Back of House



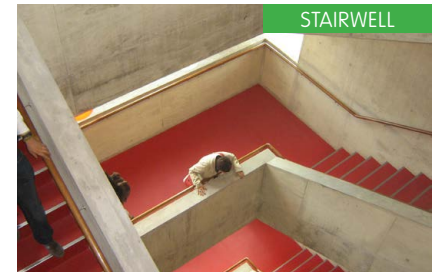
NEIGHBOURHOOD ROOM



TERRACE



SOUTH BANK ROOMS



STAIRWELL



FRED MILLER ROOM



DOON STREET CAR PARK

Credits and productions companies include: The Crown, Starcrossed Films, Fox Searchlight UK, Angel Fish Films, WhiteWolf Films and ITV.

### Make an enquiry

To make an enquiry please fill in our filming application form or our photography and photoshoot application form: [coinstreet.org/venue-hire/filming](https://coinstreet.org/venue-hire/filming)

### How long does it take?

Requests are monitored 10am-4pm, Monday – Friday (excluding Bank Holidays) and we aim to respond to all enquires on a same-day basis. Once agreed, filming or photography must be licensed, and payment received in full prior to crews coming on site. Please allow a minimum of three working days as standard however same day applications may be considered, procedure as above applies.

### Location Fees

Venue fees are on application.

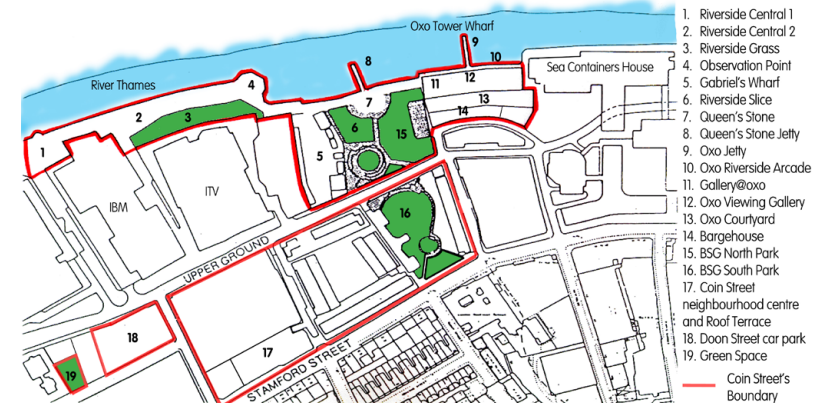
### Venue Supervision

All filming activities across the sites are required to have a Venue Supervisor. Possessing a wealth of site knowledge, the Supervisors not only provide on-site guidance on the day but also act as a dedicated liaison for logistical and technical queries during the planning process. Venue Supervision is charged at £175+VAT up to 5 hours on site, £35+VAT per hour or part thereof thereafter. Rates are applicable access time through to departure time. Excludes unit base parking.

### Why choose Coin Street

Coin Street Community Builders is a social enterprise which means income generated from commercial activities including hiring of space for filming and events, stays in the neighbourhood. This income is used to fund community programmes and maintain our site which includes Bernie Spain Gardens and the Riverside Walkway.

### Site plan:



[filming@coinstreet.org](mailto:filming@coinstreet.org) | 020 7021 1650

Coin Street neighbourhood centre,  
108 Stamford Street, South Bank, London SE1 9NH  
[coinstreet.org/venue-hire/filming](https://coinstreet.org/venue-hire/filming)

Coin Street  
community builders

Creating an inspirational neighbourhood